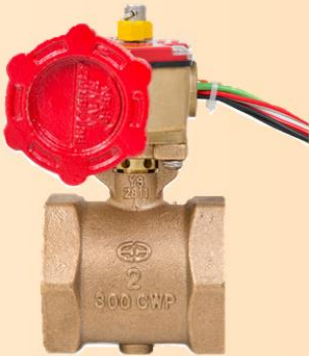
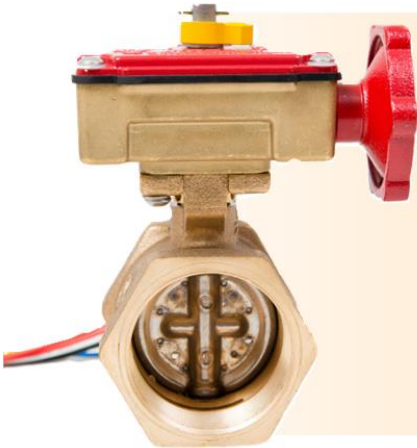


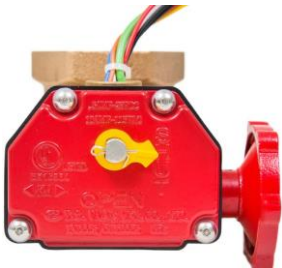
# Butterfly Valve screwed (brass)

BSB

50mm Butterfly Valve screwed (brass)



DIMENSIONS		
SIZE	A=1	L=3
1"	54	125
2"	82.6	159.8



material list			
no	part name	material	q'ty
1	body	bronze ASTM c83600	1
2	disc	SS-304	2
3	handwheel	ductile iron ASTM a536	1
4	disc seat	viton	1
5	indicator	powder metal	1
6	housing	forged brass	1
7	Pressure	300PSI Working Pressure	

