

TEST AND DRAIN VALVE

WTV-059

Test & drain Valve



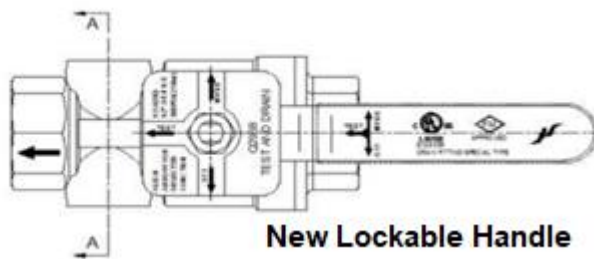
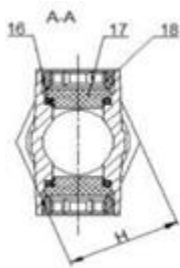
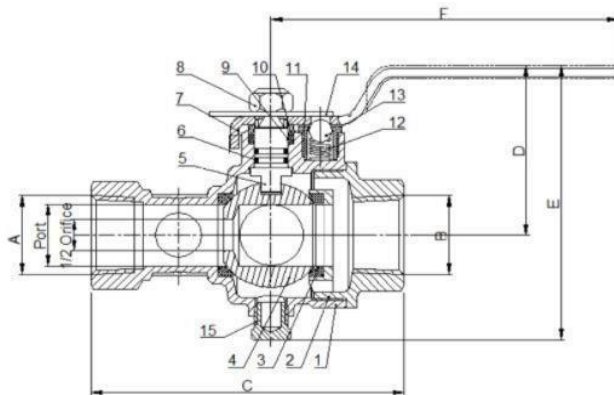
This Test & Drain Valve Used to test waterflow through sprinkler systems. When not in the closed position, the valve can be either fully open (full port), .

The valve features two large and integral sight glasses allowing for maximum visibility when operated. The compact and integrated form allow for installation in both horizontal and vertical orientations in a small amount of space.

Positive positioning of handle for off, test or drain

two threaded connections.

large, integral sight glass on both sides



materials

Body	C37700
cap	C37700
SEAL	PTFE
BALL	C37700
STEM	C37700
O-RING	NBR
LEVER	304
NUT	304
GLAND PACKING	PTFE
GLAND RING	C37700
GLAND NUT	C37700
SPRING	304
STEEL BALL	304
INDICATOR PLATE	304
PLUG	C37700
WASHER	NBR
SIGHT GLASS	LEXAR
RETAINING RING	C37700

dimension-weights-quantities

A/B	Size	PORT	C	D	E	F	H
1"	25mm	1.024"	5"	2.81"	4.56"	5.55"	1.65"